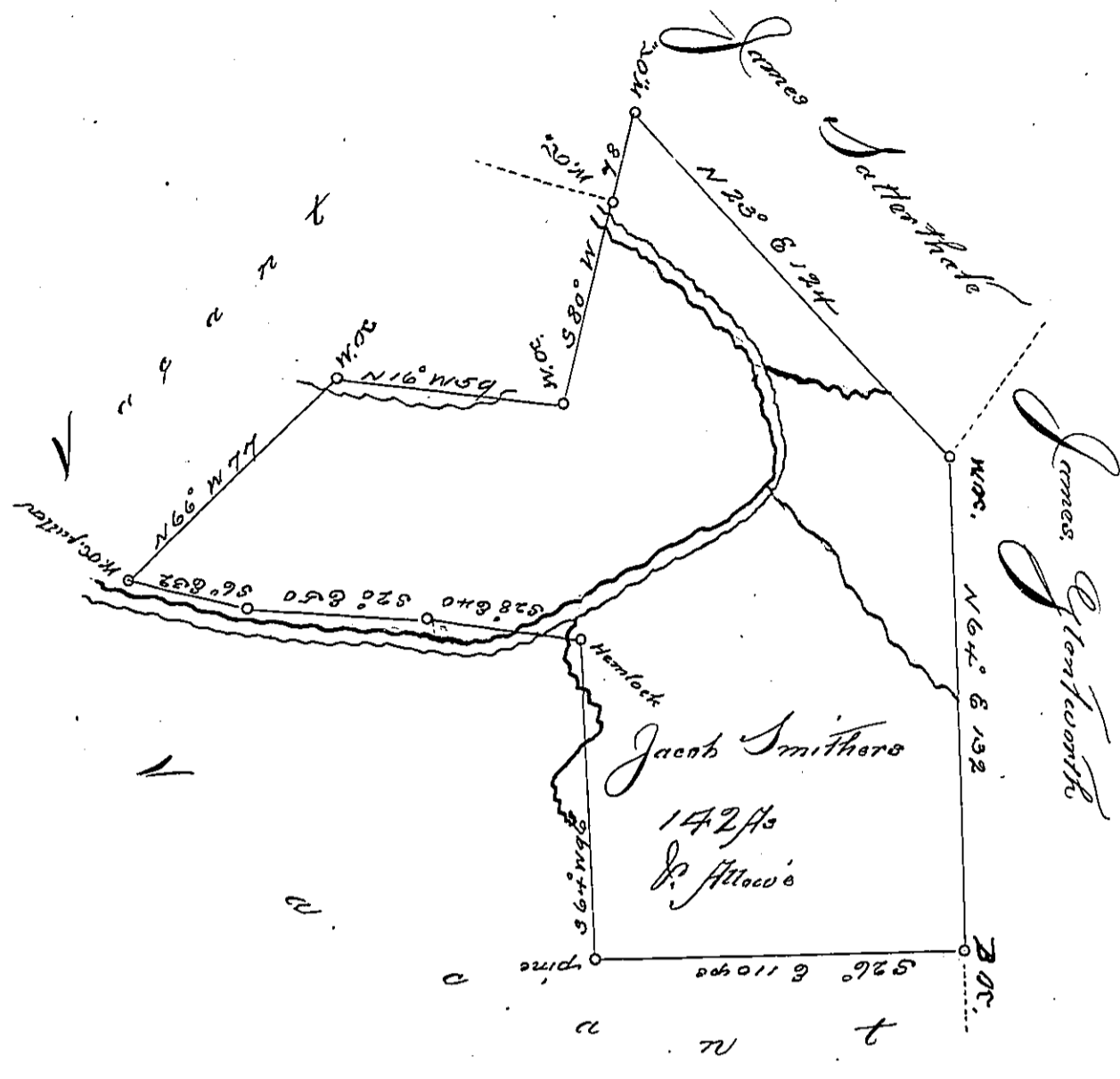


W



A Draft of a tract of land called \_\_\_\_\_ Situate on Nescopeck Creek  
 joining Land Surveyed for James Glentworth Sr in Luzerne County Con-  
 taining One Hundred & forty two acres & Allowance of six up. abt. &c. Surveyed for  
 Jacob Smithers The 25<sup>th</sup> Day of Feby. 1786. in pursuance of a warrant  
 Dated the 30<sup>th</sup> Day of Juny 1786  
 by Wm Gray D. S. H.

To Daniel Brodhead Esqr  
 Suron. Genl.

IN TESTIMONY that the above is a copy of the original remaining on file in the  
 Department of Internal Affairs of Pennsylvania, made con-  
 formably to an Act of Assembly approved the 16th day of  
 February, 1833, I have hereunto set my Hand and caused  
 the Seal of said Department to be affixed at Harrisburg, this

Ninth day of April 1891

Thos Stewart  
 Secretary of Internal Affairs